

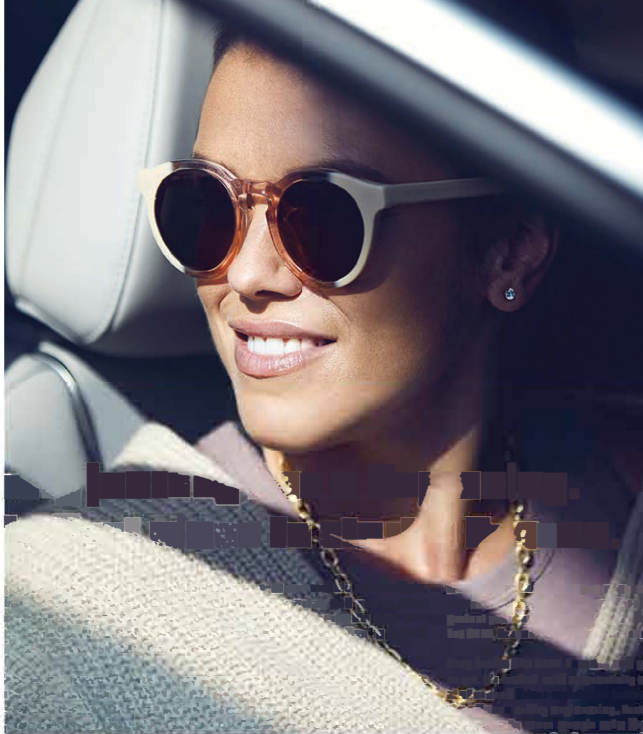
2024

TUCSON

KEY HYUNIDA

Phone: (904) 642-6060





Every journey has a beginning. The best place to start is Tucson.

Every year, the editors of *U.S. News & World Report* compare vehicle after vehicle, evaluating everything from capability and fuel economy to safety and pricing. Their conclusion? For the second year in a row, they named Hyundai Tucson the 2023 Best Compact SUV for Families, and Tucson Plug-in Hybrid the 2023 Best Plug-in Hybrid.¹ You're about to discover the many reasons why.

Start by getting to know the 2024 Tucson lineup. Our 2.5L Smartstream gas engine powers four trim levels: Tucson SE, SEL, XRT and Limited. Then there's our expanding lineup of Hybrid EVs. On the Tucson Hybrid, Tucson Plug-in Hybrid and sporty Tucson N Line, everything people love about Tucson is electrified – and turbocharged.

No matter which Tucson you choose, you'll benefit from Hyundai's leadership when it comes to safety. Hyundai SmartSense, our suite of advanced safety technologies, helps protect you from all angles as you drive.² And helps avoid accidents in the first place. For 2024, Tucson's occupant protection is enhanced with new 2nd-row side airbags.

Step inside the 2024 Tucson, and you'll see it's got plenty of room for people and cargo. It's loaded with connectivity and convenience technologies – and a wide array of advanced driver-assistance features are also available as part of Tucson's state-of-the-science safety engineering. Test-drive Tucson...and let your journey begin. You'll discover why more people who buy a Hyundai buy another. And why Brand Keys has ranked Hyundai #1 in customer loyalty 14 years in a row.³

DE
DEALER



¹View U.S. News Best Cars at cars.usnews.com. ²Safety features vary by model and trim level. For details, refer to the Features section in this brochure or visit HyundaiUSA.com. ³Based on Brand Keys 2010, 2011, 2012, 2013, 2014, 2015, 2016, 2017, 2018, 2019, 2020, 2021, 2022 and 2023 Customer Loyalty Engagement Index.

TUCSON Limited in Shimmering Silver / Curated Silver



TUCSON XRT in White Pearl



TUCSON XRT with HTRAC All Wheel Drive



TUCSON Limited LED Daytime Running Lights



TUCSON XRT exclusive exterior accents

Cut loose from the cookie-cutter.

There's no mistaking Tucson for other compact SUVs on the road. Its expressive styling comes from the advanced design language of Hyundai.

You see it articulated in the sensuous sportiness of Tucson's bold stance and striking proportions. You can feel it in the kinetic energy of cut jewel-like surfaces that shape Tucson's stunning form. The most distinctive design element? A dazzling cluster of available LED Daytime Running Lights hidden within the front grille. Revealed only when illuminated, they project the unmistakable signature of Tucson.

For an expression that's even edgier, check out Tucson XRT. It's flush with rugged additions like roof cross rails, a tow hitch, and beefier cladding around the wheel wells and side

sills – as well as exclusive styling features like alloy wheels finished in matte black.

The Tucson SE, SEL, XRT and Limited models pair a spirited Smartstream 2.5L engine with an 8-speed automatic transmission. An innovation called Idle Stop & Go helps make the engine super-efficient, too: With front wheel drive, you'll get up to an EPA-estimated 28 combined MPG.¹

Equipped with available HTRAC All Wheel Drive, Tucson is ready to power you through less-than-ideal road conditions. And with Drive Mode Select, you can set your Tucson to the mode of your choice: Normal, Sport, Smart or – when the road is slippery – Snow mode for enhanced traction control.²



TUCSON Limited in Shimmering Silver / Curated Silver

¹EPA estimates for comparison only. Mileage may vary. Your actual mileage will vary with options, driving conditions, driving habits and the vehicle's condition. ²Snow mode can help you drive more effectively on slippery surfaces such as snowy or muddy roads.

Tucson Hybrid EVs: Commute on electric. Road trip on gas.

Hybrid electric vehicles offer best-of-both-worlds drivability. Tucson Hybrid and Tucson Plug-in Hybrid have led this game-changing movement to reduce greenhouse emissions and shrink carbon footprints. For 2024, Tucson N Line is going hybrid, too, adding EV appeal to aggressive styling inspired by Hyundai's success on race tracks and rally stages around the world.

Tucson Hybrid and Tucson N Line are both powered by a turbocharged 1.6L engine and 44.2 kW electric motor that combine for 226 net horsepower and up to an estimated 38 combined MPG.¹ You'll feel the impressive effects of this turbo engine's fluid power with every prodding of the accelerator pedal.

Tucson Plug-in Hybrid's 66.9 kW electric motor is powered by a robust 13.8 kWh battery pack. A 7.2 kW onboard charger lets you recharge the battery in as little as two hours² for an all-electric range of up to 33 miles with an 80 MPGe rating.³

Regenerative braking converts kinetic energy into electric power, working to extend your battery's charge. For longer range, Tucson Plug-in Hybrid's turbocharged 1.6L engine works in concert with the electric motor to generate up to 261 net horsepower and an EPA-estimated combined 35 MPG.¹

HTRAC All Wheel Drive is standard on all three hybrid models. The system includes a driving mode optimized for snowy or slippery roads. There's also e-Handling technology onboard, which takes advantage of the electric motor's impressive torque to provide improved traction, stability and confidence while cornering.

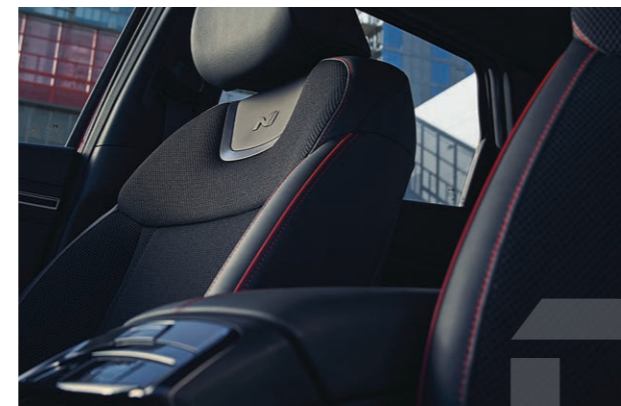
Have a camper or recreational toys to trailer? The tow rating of Tucson, Tucson Hybrid and Tucson Plug-in Hybrid is up to 2,000 pounds.⁴ And because the battery packaging is so compact, Tucson hybrids provide ample cargo volume – letting you pack even more into your weekend adventures.



Plug-in Hybrid charging port



TUCSON Hybrid N Line with exclusive 19" wheels



TUCSON Hybrid N Line sport combination seats



TUCSON Hybrid N Line with black sport combination seats and red interior accents



¹EPA estimates for comparison only. Mileage may vary. Your actual mileage will vary with options, driving conditions, driving habits and the vehicle's condition. ²Charge time based on a 240V Level 2 charger. ³MPGe is the EPA-equivalent measure of gasoline fuel efficiency for electric mode operation. Use for comparison purposes only. Mileage may vary depending on driving conditions, driving habits, the vehicle's condition, the age/condition of the lithium ion battery, and other factors. ⁴Towing capacity with trailer brakes. Towing capability varies by configuration. See the towing guide in the Owner's Manual for proper use and additional information.



Open serenity.

The sophisticated and sensuous ambiance of the Tucson interior is modern design at its best. Through color, texture and form, Hyundai designers have created a space that is inviting and peaceful, even as it energizes and engages you and your passengers. It's all about premium features that elevate your enjoyment – like available heated and ventilated front seats or heated 2nd-row seats.

Dual automatic temperature control is standard on the SEL trim and up, and Multi-Air Mode technology is available to soften the cabin's airflow, making climate control a breeze – soothing and gentle. Ambient mood lighting is available for dialing in an atmosphere to your liking.

And that open feeling enjoyed by those seated up front? It's extended to the rear passengers as well: Tucson and Tucson Hybrid feature class-leading legroom in the 2nd row.¹ All the way in back, an available hands-free, gesture-free smart power liftgate² and remote-release folding 2nd-row seats provide easy access to Tucson's spacious cargo area – complete with an innovative dual-level cargo floor.

As the driver, you're kept informed by an available 10.25" digital instrument cluster – standard on Tucson SEL with Convenience Package and up. Tucson's elegantly designed center stack is easy on the eyes – and even easier to use. Available capacitive-touch climate controls feature a clean, futuristic interface. The touch controls of Tucson's available Bose® premium audio and 10.25" navigation systems are complemented by standard Apple CarPlay® and Android Auto™ that let you plug into your digital life wherever you may roam.³



Reclining 60/40 split-folding 2nd-row seats



10.25" digital instrument cluster



Wide 10.25" touchscreen navigation display



Panoramic sunroof



Best-in-class 2nd-row legroom

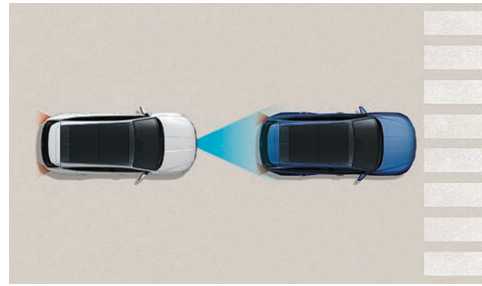
¹Tucson/Tucson Hybrid claim based on comparison of specifications on manufacturer websites. ²Not available on Tucson SE. The hands-free smart liftgate will open when your Proximity Key is within 3 feet of the detection area for at least 3 seconds. Radio transmitters and other vehicle smart keys may interfere in normal operation. See Owner's Manual for details and limitations. ³Apple CarPlay® is a registered trademark of Apple Inc. Android Auto™ is compatible with Android™ phones running Android 5.0 or higher. Android Auto may not be available on all devices and is not available in all countries or regions. Additional apps may be required. Android and Android Auto are trademarks of Google LLC.

Protect your family. With Hyundai SmartSense.

Every 2024 Tucson is engineered with Hyundai SmartSense, a remarkable suite of advanced safety and driver assistance technologies.¹ To help Tucson drivers avoid accidents in the first place, SmartSense includes standard Forward Collision-Avoidance Assist,² Lane Keeping Assist³ and Driver Attention Warning⁴ – innovations designed to alert you to potential hazards.

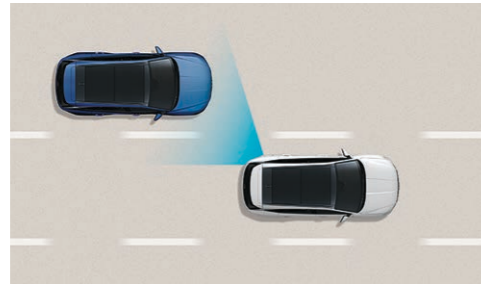
As the driver of a 2024 Tucson, you'll feel haptic feedback through the steering wheel to alert you whenever Lane Keeping Assist or Blind-Spot Collision-Avoidance Assist⁵ are engaged. An array of available Blind-Spot View Monitor and Surround View Monitor cameras give you a full 360-degree sense of what's happening around your vehicle.⁶ So whenever you and your Tucson make your next move, you'll know there are innovative SmartSense technologies helping to safeguard your journey.

Hyundai SmartSense Technologies



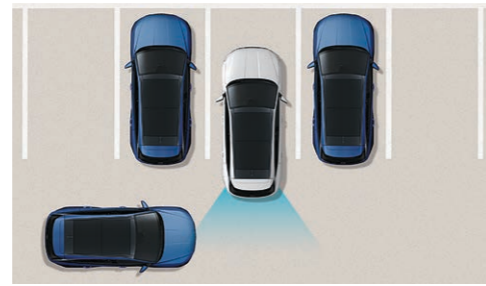
1. Forward Collision-Avoidance Assist

When the forward camera and/or radar detect a vehicle, pedestrian or cyclist in your path, or detect oncoming cars when turning left in an intersection, your Tucson warns you of a potential collision. If you don't begin stopping in time, the system may automatically apply emergency braking.²



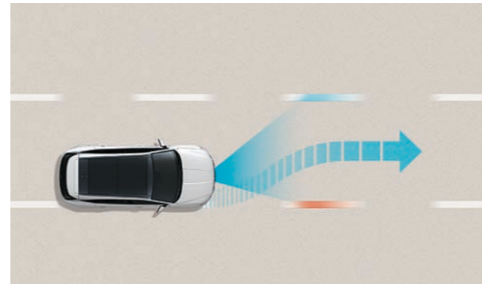
2. Blind-Spot Collision-Avoidance Assist

If your Tucson detects a vehicle in your blind spot while your turn signal is on, it alerts the driver and applies light braking before you change lanes to help avoid a collision. It can also detect vehicles as far as two lanes over to help prevent collisions when exiting a parallel parking spot.⁵



3. Rear Cross-Traffic Collision-Avoidance Assist

Backing out of a parking space and wondering whether there's cross traffic coming your way? This feature warns you of another vehicle that is detected to be approaching from the side. If necessary, your Tucson may automatically apply braking to help prevent a collision.⁷



4. Lane Following Assist

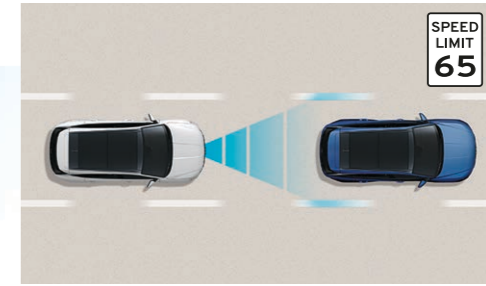
Using the front-view camera to detect lane markers on the road, this feature offers subtle steering corrections to help keep you centered in your lane. Your Tucson can even determine a virtual path to help keep you positioned in your driving lane based on the movements of the vehicle in front of you.⁸



Blind-Spot View Monitor

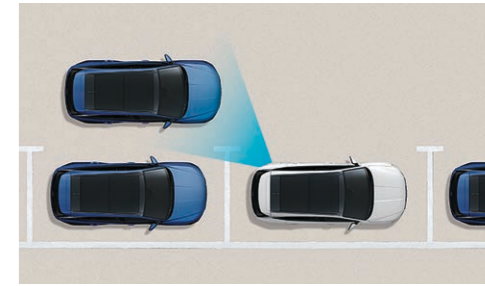


Surround View Monitor



5. Highway Driving Assist

Acting as your copilot on the highway, this feature is available to help keep you centered in your lane while maintaining a set speed and distance from the vehicle in front. It uses navigation map data to automatically adjust for changing speed limits and reduce your speed when it detects you are approaching a curve in the road.⁹



6. Safe Exit Warning | Rear Occupant Alert

After parking, Safe Exit Warning alerts you when a vehicle is detected to be approaching from behind, letting the driver know it may not be safe to open the street-side doors.¹⁰ Rear Occupant Alert is also available to help ensure your family's safety, even after you've exited your Tucson.¹¹



2023 Hyundai TUCSON¹²
Gas engine with FWD

¹ Safety features vary by model and trim level. For details, refer to the Features chart in this brochure or visit HyundaiUSA.com. ² Forward Collision-Avoidance Assist with Junction Turning (FCA-JT) is intended to be a supplement to safe driving practices. The system is not designed to detect certain stationary objects such as trees or poles, and may not detect all vehicles, pedestrians or cyclists under certain conditions. The system's Junction Turning function operates when the vehicle's left turn signal is activated, the vehicle is traveling between approximately 6-19 mph and the oncoming vehicle's speed is between approximately 19-44 mph. The system is a driver assistance system and is not a substitute for safe driving. The driver is responsible for being attentive and maintaining control of the vehicle, and should not wait for the system's alerts before braking as there may not be sufficient time to brake safely. See Owner's Manual for details and limitations. ³ Lane Keeping Assist operates only when the lane markings are clearly visible on the road. It will not work under all circumstances and will not prevent loss of control. It is a supplemental assist and does not replace the need for extreme care and attention by the driver. It uses a camera in the upper windshield area, so it is imperative this area be free of blockage such as stickers, dirt, snow, tinting material, markings and labels. Avoid putting objects on the dashboard that may reflect light or images onto the system camera area. See Owner's Manual for details and limitations. ⁴ It is the driver's responsibility to remain alert at all times. Driver Attention Warning is only a warning to inform the driver of a potential lack of driver attention or drowsiness. It does not detect and provide an alert in every situation. See Owner's Manual for details and limitations. ⁵ Blind-Spot Collision-Avoidance Assist (BCA) assists the driver by warning of other cars in the blind spot region. It senses the rear side territory of the vehicle when it is traveling over 20 mph. There are limitations to the function, range, detection and clarity of the system. It will not detect all vehicles or objects in the blind spot. Its operation depends on the size, distance, angle and relative speed difference between your car and other cars. BCA may not operate if sensors are obscured in any way. Do not rely exclusively on BCA. BCA is a supplemental system and the driver must still be attentive and exercise caution when driving. It is the driver's responsibility to be aware of the surroundings and ensure it is clear before changing lanes or directions. See Owner's Manual for details and limitations. ⁶ The Blind-Spot View Monitor (BVM) assists the driver in changing lanes by providing a live view of the blind spots on either side of the vehicle and an audible alert if another vehicle is detected. Turn signal must be activated, and other system limitations apply. Do not rely exclusively on BVM. It is the driver's responsibility to be aware of the surroundings and ensure it is clear before changing lanes or directions. The Surround View Camera System is a parking support system. The Surround View Monitor cannot completely eliminate blind spots, may not detect every object and does not warn of moving objects. Always check your surroundings before moving your vehicle. See Owner's Manual for details and limitations. ⁷ Rear Cross-Traffic Collision-Avoidance Assist (RCCA) is designed to notify drivers of approaching cross traffic behind their vehicle. When another vehicle is detected while you are backing out of a parking spot, it provides audible and visual display warnings and applies braking if it senses a collision is imminent. RCCA is active when the vehicle is in reverse gear and backing at a speed less than 6 mph. It only engages during the first activation of reverse gear from park and may not detect all vehicles, depending on the size, angle, distance and speed of the other vehicle. Never rely exclusively on RCCA. Always look over your shoulder and use your mirrors to confirm rear clearance. There are limitations to the function, detection, range and clarity of the system. See Owner's Manual for details and limitations. ⁸ Lane Following Assist (LFA), when actively engaged with Smart Cruise Control or Highway Driving Assist, helps keep your vehicle centered in its lane when the lane markings are clearly visible on the road. LFA will not work under all circumstances and will not prevent loss of control. LFA is a supplemental assist, and does not replace the need for extreme care and attention by the driver. See Owner's Manual for details and limitations. ⁹ Highway Driving Assist (HDA) is for highway use only and can help maintain a safe distance from the vehicle ahead while keeping your vehicle centered in its lane when lane markings are clearly visible on the road. HDA should not be used in poor weather, heavy or varying traffic, or on winding or slippery roads. HDA will not work under all circumstances and will not prevent loss of control. Driver remains responsible to slow or stop the vehicle to avoid a collision. See Owner's Manual for details and limitations. ¹⁰ When the vehicle is parked, Safe Exit Warning (SEW) can alert occupants planning to exit the vehicle when another vehicle is approaching from behind. SEW does not work in all situations and is not a substitute for driver or passenger attentiveness. Always be aware of your surroundings and attentive of approaching vehicles. See Owner's Manual for details and limitations. ¹¹ When the vehicle is parked and the engine has been turned off, the Ultrasonic Rear Occupant Alert (UROA) can help alert the driver if it detects movement from a child or pet. Upon exiting and locking the vehicle, the UROA may provide visual, audible, and/or Bluelink alerts if the interior overhead sensor detects movement. UROA is not a substitute for driver attentiveness. Never leave a child or pet unattended in a vehicle. Bluelink notification requires properly equipped vehicle with an active Bluelink account. See Owner's Manual for details and limitations. ¹² Overall 5-Star Safety rating applies to 2023 non-hybrid Tucson models with FWD only. Government 5-Star Safety ratings are part of the National Highway Traffic Safety Administration's (NHTSA) New Car Assessment Program (nhtsa.gov).



Your personal assistant is here.

Tucson's technologies are so in tune with your needs, they're like having your own assistant. Arms full of groceries? Stand behind your Tucson – within a few seconds, it recognizes your Proximity Key and automatically pops the liftgate open.¹ Sensors in Tucson's door handles can also recognize your Proximity Key and let you enter with the touch of your hand.

With the available Digital Key, you can unlock the front doors remotely,² or by touching your compatible smartphone to the door handle.³ Once inside, placing your phone on the wireless charging pad adjusts the driver's preferences and enables Tucson's push button start.⁴

With available Dynamic Voice Recognition, simple voice commands are all you need to activate climate controls or select SiriusXM® channels.⁵ Tucson also remembers the personal preferences of multiple drivers for things like the multimedia presets and instrument cluster display settings – and is smart enough to recall those preferences in an instant using its available Remote Driver Profile Management feature.⁶

And how's this for a magic trick? With Remote Smart Parking Assist, your Tucson Limited can effortlessly maneuver itself into and out of parking spaces.⁶ Just press a button on your key fob while standing outside of the vehicle, and you can remotely park your Tucson into a tight spot. Another push of the button, and Tucson easily drives itself out of the parking space.



Digital Key



Remote Smart Parking Assist



Apple CarPlay®



Hands-free smart power liftgate with auto-open



Wireless phone charger

¹Not available on Tucson SE. The hands-free smart liftgate will open when your Proximity Key is within 3 feet of the detection area for at least 3 seconds. Radio transmitters and other vehicle smart keys may interfere in normal operation. See Owner's Manual for details and limitations. ²Requires properly equipped vehicle and active Bluelink Advanced subscription (complimentary for the original owner). ³The available Hyundai Near Field Communication Digital Key requires a compatible Android smartphone and appropriately equipped Tucson. Not all Android devices are compatible. Tucson vehicle must be equipped with a smart key with push button start, wireless phone charger and Audio Video Navigation System 5.0 (or newer) or Display Audio 2.0. Lock and unlock functionality work on the front doors only. See your Owner's Manual for details and limitations. ⁴Qi wireless charging function is based on smartphone compatibility and/or specific accessory cases. Not equipped on Tucson SE. ⁵Dynamic Voice Recognition varies by unit. Speak in a normal voice and minimize background noise for best results. See Owner's Manual for further details and limitations. All SiriusXM services require a subscription sold separately, or as a package, by Sirius XM Radio Inc. after the trial period has elapsed. The subscription plan you choose will automatically renew, and you will be charged according to your chosen payment method at then-current rates. Fees and taxes apply. To cancel, you must call SiriusXM at 1-866-635-2349. See SiriusXM Customer Agreement for complete terms at siriusxm.com. All fees and programming subject to change. Satellite and outside-the-car lineups vary slightly. Sirius, XM, SiriusXM and all related marks and logos are trademarks of Sirius XM Radio Inc. ⁶Remote Smart Parking Assist (RSPA) can remotely help park the vehicle. However, several factors can impact RSPA performance. RSPA may not function correctly if one or more of the parking sensors is damaged, dirty or covered, or if weather conditions (heavy rain, snow or fog) interfere with sensor operation. Always inspect the parking area with your own eyes. See Owner's Manual for details and limitations.

Introducing Bluelink+: No fees. No trial. No worries.

With the introduction of Bluelink+, Hyundai becomes the first automotive brand to offer its suite of connected car features to new car purchasers at no extra cost. Bluelink+ is complimentary with the purchase of your new 2024 Tucson.

Bluelink features technology designed to help keep you safe – from automatic collision notifications and automatic emergency assistance if your airbags deploy to enhanced roadside assistance that sends your exact location to a roadside assistance associate.² Bluelink also includes helpful maintenance features like remote diagnostics as well as monthly vehicle health reports. All complimentary with a 2024 Tucson new vehicle purchase for the life of the supporting wireless network technology.³

Your MyHyundai app turns your compatible smartphone, smartwatch or smart home assistant device into a Bluelink remote control that can unlock your Tucson's doors and start the engine and climate controls before you walk out the door.⁴

Starting your Tucson remotely, or with the available Digital Key, also tunes radio and navigation system presets using your Bluelink personal profile. Want to remotely check if you've left your doors unlocked or the lights on? Just consult your MyHyundai app. You can also share your Digital Key with trusted friends and family members – as the primary driver, you control when a shared key can be used, and you can pause or end shared-key access at any time.



Automatic Emergency Assistance

Bluelink offers you 24/7 SOS Emergency Assistance as well as Automatic Collision Notification that calls for help if you're in an accident where your vehicle's airbags deploy.



On-Demand Diagnostics

Run vehicle diagnostics from your touchscreen, report issues at the press of a button and receive monthly vehicle health reports or maintenance reminders by email.



Remote Controls

Your compatible smartphone, smart speaker or wearable device lets you remotely start Tucson's engine, set the cabin temperature, unlock the doors and more.



Destination Send-to-Car

Use the MyHyundai app to find restaurants or other points of interest and send the destination to your Tucson's available navigation system before you start to drive.



Remote Vehicle Status

Wondering how much fuel is in your tank? If your vehicle's liftgate is open or the doors are unlocked? Your MyHyundai app knows the answers to these questions and more.



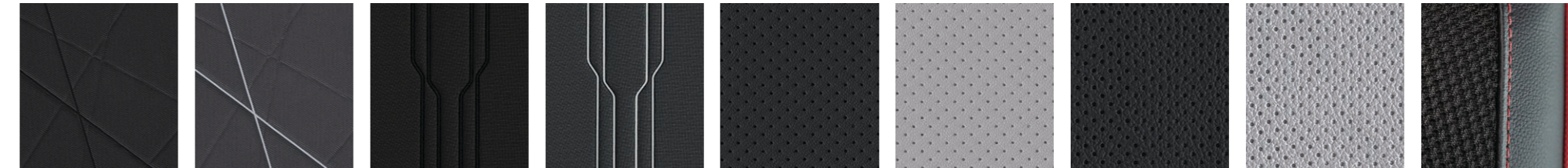
Vehicle Charging Dashboard

Find charging stations, control your Tucson Plug-in Hybrid's charging remotely and schedule charging times at cheaper off-peak hours.⁵



TUCSON Hybrid N Line in Ultimate Red

Interior Colors



Black Cloth SE

Gray Cloth SE

Black Cloth SEL/Blue

Gray Cloth SEL/Blue

Black H-Tex™ SEL Convenience / XRT

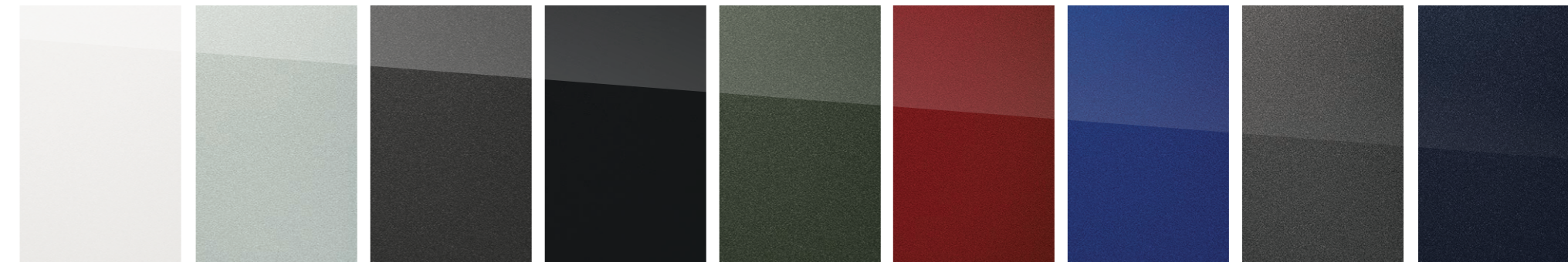
Gray H-Tex™ SEL Convenience

Black Leather Limited

Gray Leather Limited

Black Sport Combination N Line

Exterior Colors



Serenity White Pearl

Shimmering Silver/Curated Silver

Portofino Gray/Titan Gray

Phantom Black

Amazon Gray*

Ultimate Red

Intense Blue**

Hampton Gray

Deep Sea

*Amazon Gray exclusive to Tucson Hybrid and Tucson Plug-in Hybrid.
**Limited availability.

Wheels

17" Alloy Wheel
TUCSON: SE / SEL



17" Alloy Wheel
HYBRID: Blue



19" Alloy Wheel
TUCSON: XRT



19" Alloy Wheel
HYBRID: N Line



19" Alloy Wheel
TUCSON & HYBRID:
SEL Convenience & Limited
PLUG-IN HYBRID:
SEL & Limited



¹Bluelink+ requires an active subscription agreement subject to the Connected Services Terms and Conditions. Term starts from the new vehicle date of first use. Only use Bluelink and corresponding devices when safe to do so. Cellular and GPS coverage is required. Features, specifications and fees are subject to change. A fee will apply for map and multimedia over-the-air (OTA) updates, which are dependent on an active Bluelink connection, after an initial 3-year period of complimentary updates. For details and limitations, visit HyundaiUSA.com or your authorized Hyundai dealer. ²Bluelink agents will contact existing emergency service responders. ³All Bluelink services rely on digital wireless telecommunications technology outside of our control and in the control of the wireless carriers who provide the telecommunications technology. 4G LTE cellular networks are controlled and maintained by third-party wireless carriers. Telecommunication technologies have been known to change over time. If and when these networks change and discontinue services or the underlying technology required to support Bluelink is obsolete, then the connected services will not work, and we will be forced to cancel impacted subscription services. ⁴Requires active Bluelink Advanced subscription (complimentary for the original owner). Remote climate control available on properly equipped models with fully automatic temperature control. Remote stop only available when in remote start mode. ⁵For remote charging, vehicle needs to be plugged into an electrical socket. See Owner's Manual for details and limitations.

TUCSON SE

2.5L GDI/MPI Engine

187 HP

178 LB-FT



Popular Features

- 17" alloy wheels
- LED Daytime Running Lights and headlights
- Steering wheel haptic feedback for driver-assistance features
- Rearview camera
- 8.0" Display Audio with AM/FM/HD Radio™
- Android Auto™/Apple CarPlay®
- Dual front USB ports
- Stain- and odor-resistant cloth seating surfaces
- Reclining 60/40 split-folding 2nd-row seats with center armrest
- Tilt-and-telescopic steering wheel with audio, phone and cruise controls
- Smart Cruise Control with Stop & Go
- Intelligent Speed Limit Assist
- Forward Collision-Avoidance Assist with Pedestrian/Cyclist Detection and Junction Turning Detection
- Blind-Spot Collision-Avoidance Assist
- Rear Cross-Traffic Collision-Avoidance Assist
- Lane Keeping Assist and Lane Following Assist
- Driver Attention Warning
- Rear Occupant Alert
- Safe Exit Warning
- Automatic headlights with High Beam Assist

HTRAC All Wheel Drive Option

HTRAC All Wheel Drive

Exterior Dimensions	TUCSON	HYBRID	PLUG-IN
Wheelbase	108.5 in	←	←
Overall Length	182.3 in	←	←
Overall Width	73.4 in	←	←
Overall Height – FWD / AWD with roof rails	65.6 / 66.3 in	– / 66.3 in	←

TUCSON SEL

2.5L GDI/MPI Engine

187 HP

178 LB-FT



Popular Features

- Wireless phone charger
- Proximity Key with push button start
- 8-way power driver seat plus power lumbar support
- Bluelink+ Connected Car System
- Digital Key
- Hands-free smart power liftgate with auto open
- Dual automatic temperature control and auto-defogging windshield
- Dual front and dual 2nd-row USB ports
- Roof side rails and heated side mirrors

SEL Convenience Package

- 19" alloy wheels
- Side mirrors with LED turn signal indicators
- LED taillights
- Power tilt-and-slide sunroof
- H-Tex™ seating surfaces
- 10.25" digital instrument cluster
- Ambient LED interior lighting
- 10.25" navigation system
- Dynamic Voice Recognition
- LED overhead interior lighting
- Auto-dimming rearview mirror
- Leather-wrapped steering wheel and shift knob
- Ultrasonic Rear Occupant Alert

Interior Dimensions	TUCSON	HYBRID	PLUG-IN
Headroom – front / 2nd row without sunroof	40.1 / 39.5 in	←	←
Headroom – front / 2nd row with sunroof	38.3 / 39.5 in	N/A	N/A
Headroom – front / 2nd row with panoramic sunroof	38.1 / 39.0 in	38.1 / 38.7 in	←
Legroom – front / 2nd row	41.4 / 41.3 in	←	41.4 / 39.5 in

TUCSON XRT

2.5L GDI/MPI Engine

187 HP

178 LB-FT



Popular Features

- Black 19" alloy wheels
- Black front/rear lower fascias and side mirrors
- Running boards and exclusive side moldings
- Black H-Tex™ seating surfaces
- Black headliner and pillar trim panels
- Roof cross rails | Tow hitch

TUCSON Limited

2.5L GDI/MPI Engine

187 HP

178 LB-FT



Popular Features

- Blind-Spot View Monitor | Surround View Monitor
- Highway Driving Assist | Navigation-based Smart Cruise Control
- Leather-trimmed seats and ventilated front seats
- Heated 2nd-row seats and heated steering wheel
- Bose® premium audio
- Panoramic sunroof
- Remote Smart Parking Assist | Parking Distance Warning – Forward & Reverse

Interior Dimensions	TUCSON	HYBRID	PLUG-IN
Shoulder Room – front / 2nd row	57.6 / 56.0 in	←	←
Passenger Volume	108.2 cu ft	107.9 cu ft	105.9 cu ft
Cargo Capacity – 2nd-row seats up / down	38.7 / 74.8 cu ft	38.7 / 74.5 cu ft	31.9 / 66.3 cu ft
Total Interior Volume	146.9 cu ft	146.7 cu ft	137.8 cu ft

TUCSON Hybrid Blue

1.6L Turbo GDI Hybrid Engine

226 NET HP

258 NET LB-FT



Popular Features

- HTRAC All Wheel Drive | 17" alloy wheels
- 10.25" navigation system
- Dynamic Voice Recognition
- Wireless phone charger
- Bluelink+ Connected Car System | Digital Key
- Hands-free smart power liftgate with auto open

TUCSON Hybrid Limited

1.6L Turbo GDI Hybrid Engine

226 NET HP

258 NET LB-FT



Popular Features

- Blind-Spot View Monitor | Surround View Monitor
- Memory driver's seat | 8-way power front passenger seat
- Leather-trimmed seats and ventilated front seats
- Heated 2nd-row seats and heated steering wheel
- Remote Smart Parking Assist | Highway Driving Assist
- Premium LED Daytime Running Lights

TUCSON EPA MPG Estimates (City/Highway/Combined)

25/32/28 MPG | FWD 8-speed A/T with SHIFTRONIC®

23/29/25 MPG | AWD 8-speed A/T with SHIFTRONIC®

EPA estimates for comparison only. Mileage may vary. Your actual mileage will vary with options, driving conditions, driving habits and the vehicle's condition.

TUCSON Hybrid SEL Convenience

1.6L Turbo GDI Hybrid Engine

226 NET HP

258 NET LB-FT



Popular Features

- 19" alloy wheels
- Panoramic sunroof
- 10.25" digital instrument cluster
- Leather-wrapped steering wheel
- H-Tex™ seating surfaces
- Ambient LED interior lighting

TUCSON Plug-in Hybrid SEL

1.6L Turbo GDI Hybrid Engine

261 NET HP

258 NET LB-FT



Popular Features

- HTRAC All Wheel Drive | 19" alloy wheels
- 10.25" navigation system
- Dynamic Voice Recognition
- Bluelink+ Connected Car System | Digital Key
- Wireless phone charger
- Hands-free smart power liftgate with auto open

TUCSON Hybrid EPA MPG Estimates (City/Highway/Combined)

38/38/38 MPG | Blue AWD 6-speed A/T

37/36/37 MPG | SEL / N Line / Limited AWD 6-speed A/T

TUCSON Hybrid N Line

1.6L Turbo GDI Hybrid Engine

226 NET HP

258 NET LB-FT



Popular Features

- N Line unique 19" alloy wheels
- N Line unique front and rear fascias
- N Line grille and rear spoiler
- N Line sport combination seats
- Black headliner and pillar trim panels
- Bose® premium audio

TUCSON Plug-in Hybrid Limited

1.6L Turbo GDI Hybrid Engine

261 NET HP

258 NET LB-FT



Popular Features

- Blind-Spot View Monitor | Surround View Monitor
- Highway Driving Assist
- Leather-trimmed seats and ventilated front seats
- Panoramic sunroof
- Heated 2nd-row seats and heated steering wheel
- Remote Smart Parking Assist | Parking Distance Warning – Forward & Reverse

TUCSON Plug-in Hybrid EPA Estimates (Combined)

35 MPG | SEL / Limited AWD 6-speed A/T

80 MPGe

TUCSON

Power & Handling	SE	SEL	XRT	Limited
187 hp/178 lb-ft Smartstream 2.5L GDI/MPI 4-cylinder engine	●	●	●	●
Idle Stop & Go	●	●	●	●
8-speed automatic transmission with SHIFTRONIC®	●	●	●	●
Shift-by-Wire electronic push button gear selection	–	–	–	●
Drive Mode Select and Downhill Brake Control	●	●	●	●
HTRAC All Wheel Drive	○	○	○	○
Electronic Parking Brake with Automatic Vehicle Hold	●	●	●	●
2,000-lb towing capacity and trailer pre-wiring	●	●	●	●
Exterior Features	SE	SEL	XRT	Limited
Automatic headlights with High Beam Assist	●	●	●	●
LED Daytime Running Lights	●	●	●	●
LED headlights: reflector type projector type	● -	● -	● -	- ●
LED taillights	–	●	●	●
XRT unique front and rear fascias	–	–	●	–
Dark chrome front and rear bumper molding	–	–	–	●
Silver painted front and rear lower fascias	–	–	–	●
Dark chrome accent front grille and Hyundai logo	–	–	–	●
Bodycolor exterior door handles	●	●	●	●
Bodycolor side mirrors	●	●	–	–
Black side mirrors	–	–	●	–
Bodycolor side mirrors with premium accent	–	–	–	●
Side mirrors with LED turn signal indicators	–	●	●	●
Acoustic-laminated windshield and solar front glass	●	●	●	●
Roof side rails and heated side mirrors	–	●	●	●
Power tilt-and-slide sunroof	–	●	–	–
Panoramic sunroof	–	–	–	●
Hands-free smart liftgate with auto open and adjustable height setting	–	●	●	●
Gloss black window surround	–	–	●	–
Rear privacy glass	–	●	●	●
Interior & Convenience Features	SE	SEL	XRT	Limited
Proximity Key with push button start	–	●	●	●
10.25" digital instrument cluster	–	●	●	●
Tilt-and-telescopic steering wheel with audio, phone and cruise controls	●	●	●	●
8-way power driver seat plus power lumbar support	–	●	●	●
8-way power front passenger seat	–	–	–	●
Leather-wrapped steering wheel and ambient LED interior lighting	–	●	●	●
Reclining 60/40 split-folding 2nd-row seats with center armrest	●	●	●	●

Interior & Convenience Features	SE	SEL	XRT	Limited
Leather-trimmed seats and ventilated front seats	–	–	–	●
H-Tex™ seating surfaces	–	●	●	–
Heated front seats	–	●	●	●
Heated 2nd-row seats and steering wheel	–	–	–	●
Memory driver's seat	–	–	–	●
Dual automatic temperature control and auto-defogging windshield	–	●	●	●
Floor console-mounted 2nd-row air conditioning vents	–	●	●	●
Smart Cruise Control with Stop & Go	●	●	●	●
Intelligent Speed Limit Assist	●	●	●	●
Auto-dimming rearview mirror with HomeLink®	- -	● -	● -	● ●
Remote Smart Parking Assist	–	–	–	●
Rearview camera	●	●	●	●
Advanced Safety	SE	SEL	XRT	Limited
Forward Collision-Avoidance Assist with Pedestrian/Cyclist Detection and Junction Turning Detection	●	●	●	●
Lane Keeping Assist and Lane Following Assist	●	●	●	●
Driver Attention Warning and Rear Occupant Alert	●	●	●	●
Blind-Spot Collision-Avoidance Assist	●	●	●	●
Rear Cross-Traffic Collision-Avoidance Assist	●	●	●	●
Safe Exit Warning	●	●	●	●
Parking Distance Warning – Forward & Reverse	–	–	–	●
Parking Collision-Avoidance Assist – Reverse	–	–	–	●
Highway Driving Assist	–	–	–	●
Navigation-based Smart Cruise Control with Curve Control	–	–	–	●
Blind-Spot View Monitor and Surround View Monitor	–	–	–	●
Audio & Connected Car Technology	SE	SEL	XRT	Limited
8.0" Display Audio	●	●	–	–
10.25" navigation system	–	●	●	●
Bose® premium audio	–	–	–	●
SiriusXM® Satellite Radio	–	●	●	●
Android Auto™ and Apple CarPlay®	●	●	●	●
Digital Key	–	●	●	●
Wireless phone charger	–	●	●	●
Bluelink+ Connected Car System	–	●	●	●
Dynamic Voice Recognition	–	●	●	●
Dual USB ports (front 2nd row)	● -	● ●	● ●	● ●

● Standard ○ Optional ● SEL Convenience Package – Not Available

TUCSON Hybrid | Plug-in Hybrid

Power & Handling	Blue	SEL C	N Line	Ltd	SEL	Ltd
226 net hp Smartstream 1.6L Turbo GDI 4-cylinder hybrid engine with 44.2 kW high-power density motor	●	●	●	●	–	–
261 net hp Smartstream 1.6L Turbo GDI 4-cylinder hybrid engine with 66.9 kW high-power density motor	–	–	–	–	●	●
6-speed automatic transmission with paddle shifters	●	●	●	●	●	●
Shift-by-Wire electronic push button gear selection	●	●	●	●	●	●
Drive Mode Select and Downhill Brake Control	●	●	●	●	●	●
HTRAC All Wheel Drive	●	●	●	●	●	●
Electronic Parking Brake with Automatic Vehicle Hold	●	●	●	●	●	●
2,000-lb towing capacity and trailer pre-wiring	●	●	●	●	●	●
Exterior Features	Blue	SEL C	N Line	Ltd	SEL	Ltd
Automatic headlights with High Beam Assist	●	●	●	●	●	●
LED Daytime Running Lights	●	●	●	●	●	●
LED headlights: reflector type projector type	● -	● -	● -	- ●	● -	- ●
LED taillights	–	●	●	●	–	●
N Line unique front and rear fascias	–	–	●	–	–	–
N Line grille and rear spoiler	–	–	●	–	–	–
Silver painted front and rear lower fascias	–	–	–	●	–	●
Dark chrome accent front grille and Hyundai logo	–	–	●	●	–	●
Side mirrors with LED turn signal indicators	–	●	●	●	–	●
Acoustic-laminated windshield and solar front glass	●	●	●	●	●	●
Roof side rails	●	●	●	●	●	●
Panoramic sunroof	–	●	●	●	–	●
Hands-free smart liftgate with auto open and adjustable height setting	●	●	●	●	●	●
Rear privacy glass	●	●	●	●	●	●
Interior & Convenience Features	Blue	SEL C	N Line	Ltd	SEL	Ltd
Proximity Key with push button start	●	●	●	●	●	●
10.25" digital instrument cluster	–	●	●	●	–	●
Tilt-and-telescopic steering wheel with audio, phone and cruise controls	●	●	●	●	●	●
8-way power driver seat plus power lumbar support	●	●	●	●	●	●
8-way power front passenger seat	–	–	–	●	–	●
Leather-wrapped steering wheel and ambient LED interior lighting	–	●	●	●	–	●
H-Tex™ seating surfaces	–	●	–	–	–	–
N Line sport combination seats	–	–	●	–	–	–
Leather-trimmed seats and ventilated front seats	–	–	–	●	–	●
Memory driver's seat	–	–	–	●	–	●

Interior & Convenience Features	Blue	SEL C	N Line	Ltd	SEL	Ltd
Reclining 60/40 split-folding 2nd-row seats with center armrest	●	●	●	●	●	●
Heated front seats	●	●	●	●	●	●
Heated 2nd-row seats and steering wheel	–	–	–	●	–	●
Dual automatic temperature control and auto-defogging windshield	●	●	●	●	●	●
Floor console-mounted 2nd-row air conditioning vents	●	●	●	●	●	●
Alloy sport pedals/scuff plates and black headliner	–	–	●	–	–	–
Smart Cruise Control with Stop & Go	●	●	●	●	●	●
Intelligent Speed Limit Assist	●	●	●	●	●	●
Auto-dimming rearview mirror with HomeLink®	- -	● -	● -	● ●	- -	● ●
Remote Smart Parking Assist	–	–	–	●	–	●
Rearview camera	●	●	●	●	●	●
Advanced Safety	Blue	SEL C	N Line	Ltd	SEL	Ltd
Forward Collision-Avoidance Assist with Pedestrian/Cyclist Detection and Junction Turning Detection	●	●	●	●	●	●
Lane Keeping Assist and Lane Following Assist	●	●	●	●	●	●
Driver Attention Warning	●	●	●	●	●	●
Rear Occupant Alert	●	●	●	●	●	●
Blind-Spot Collision-Avoidance Assist	●	●	●	●	●	●
Rear Cross-Traffic Collision-Avoidance Assist	●	●	●	●	●	●
Safe Exit Warning	●	●	●	●	●	●
Parking Distance Warning – Forward & Reverse	–	–	–	●	–	●
Parking Collision-Avoidance Assist – Reverse	–	–	–	●	–	●
Highway Driving Assist	–	–	–	●	–	●
Navigation-based Smart Cruise Control with Curve Control	–	–	–	●	–	●
Blind-Spot View Monitor and Surround View Monitor	–	–	–	●	–	●
Audio & Connected Car Technology	Blue	SEL C	N Line	Ltd	SEL	Ltd
10.25" navigation system	●	●	●	●	●	●
Bose® premium audio	–	–	●	●	–	●
SiriusXM® Satellite Radio and HD Radio™	●	●	●	●	●	●
Android Auto™ and Apple CarPlay®	●	●	●	●	●	●
Digital Key	●	●	●	●	●	●
Wireless phone charger	●	●	●	●	●	●
Bluelink+ Connected Car System	●	●	●	●	●	●
Dynamic Voice Recognition	●	●	●	●	●	●
Dual front and 2nd-row USB ports	●	●	●	●	●	●

● Standard – Not Available SEL C = Hybrid SEL Convenience Trim Ltd = Limited Trim



Hope comes standard on every Hyundai.

Each time we sell a Hyundai, a portion goes to Hyundai Hope On Wheels® to help find a cure for childhood cancer. Over the last 25 years, Hyundai Hope On Wheels has donated \$225 million to pediatric cancer research. Hope is our greatest feature. And it comes standard on every Hyundai. For more information, please visit HyundaiHopeOnWheels.org.



America's Best Warranty

POWERTRAIN LIMITED WARRANTY

10 YEARS
100,000 MILES

NEW VEHICLE LIMITED WARRANTY

5 YEARS
60,000 MILES

ANTI-PERFORATION WARRANTY

7 YEARS
UNLIMITED MILES

24/7 ROADSIDE ASSISTANCE

5 YEARS
UNLIMITED MILES

HYBRID/EV DIRECT ENERGY COMPONENTS

10 YEARS
100,000 MILES



Hyundai Complimentary Maintenance

Complimentary maintenance includes Hyundai-approved oil and oil filter change (except for electric vehicles and fuel cell electric vehicles) plus tire rotation at normal factory-scheduled maintenance intervals for 3 years or 36,000 miles, whichever comes first. More frequent maintenance due to severe driving or conditions excluded. Offer valid only for new 2020-2024 Hyundai models purchased or leased on or after February 1, 2020. See your Hyundai dealer for further details and limitations.



Owner Assurance

Our commitment to Hyundai owners does not end with the transfer of keys. Wherever the road takes you, we have got your back with Hyundai Owner Assurance, an umbrella of services and benefits that includes America's Best Warranty, 24/7 Roadside Assistance, innovative safety and car care features...and more.

While the information contained in this brochure is based on the latest information available at the time of printing, specifications and equipment can change. Feature comparisons are based on competitor information available at the time of printing. Although the information contained in this brochure is believed to be correct, accuracy cannot be guaranteed. No warranty or guarantee is being extended in this brochure, and Hyundai reserves the right to change product specifications and equipment at any time, without notice, without incurring obligations. Some vehicles are shown with optional equipment. Specifications apply to U.S. vehicles only. Please contact your Hyundai dealer or visit HyundaiUSA.com for current vehicle specifications or details on any of the programs or services listed here. As part of Hyundai's commitment to a responsible environment, this brochure was printed using paper certified by the Forest Stewardship Council®. FSC® certification helps ensure that the highest social and environmental standards are met in the making of the paper we use, contributing to conservation, responsible management and community-level benefits for people near the forests.



©2023 HYUNDAI NP020T2024